



SERVICE PARTS LIST

BULLETIN NO.
54-40-7021

SPECIFY CATALOG NO. AND SERIAL NO. WHEN ORDERING PARTS		REVISED BULLETIN 54-40-7020	DATE Feb. 2009
CORDLESS CIRCULAR SAW		WIRING INSTRUCTION SEE REVERSE SIDE	
CATALOG NO. 0730-20	STARTING SERIAL NO. A57B		

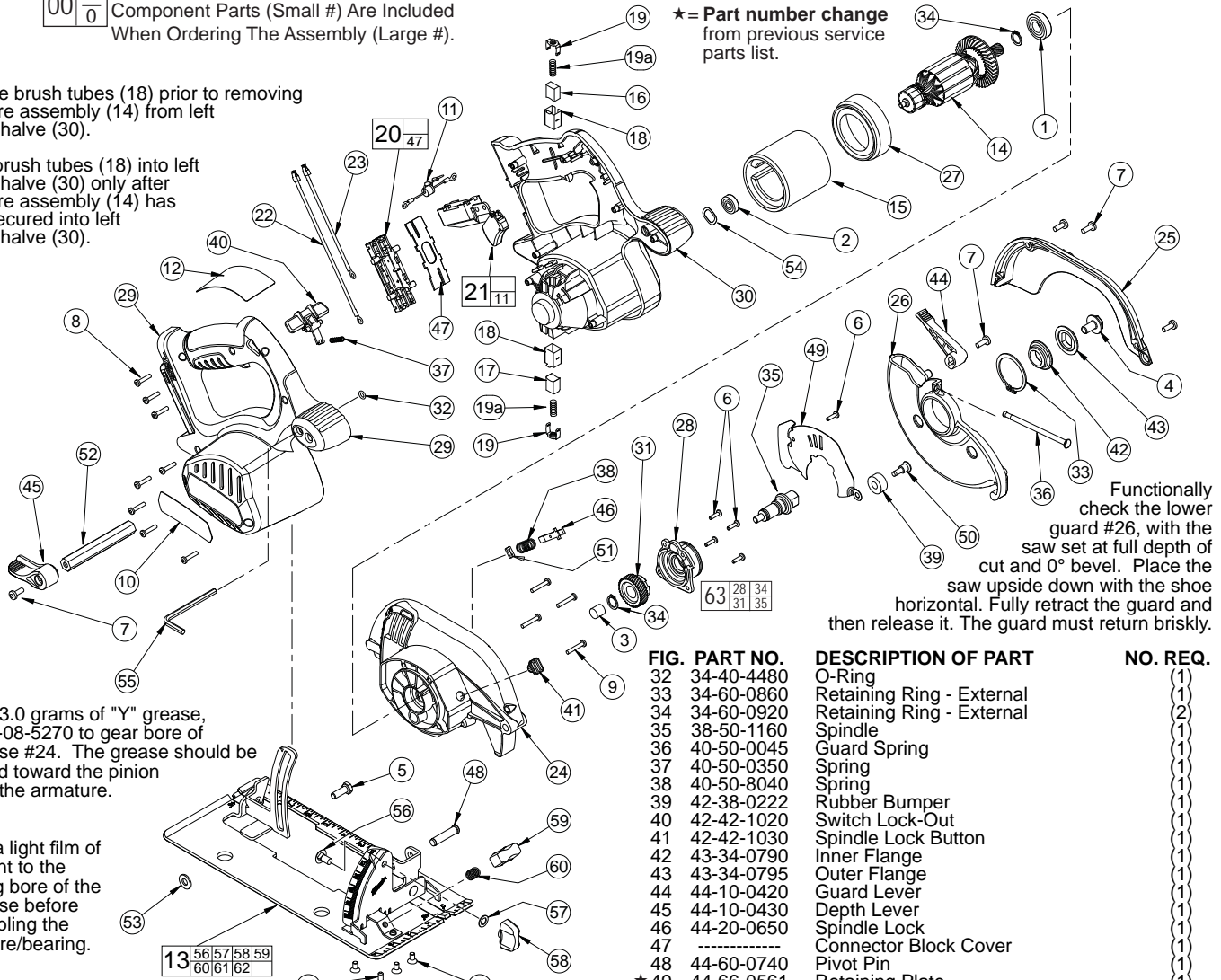
EXAMPLE:
Component Parts (Small #) Are Included
When Ordering The Assembly (Large #).

NOTE:
Remove brush tubes (18) prior to removing
armature assembly (14) from left
handle half (30).

Install brush tubes (18) into left
handle half (30) only after
armature assembly (14) has
been secured into left
handle half (30).

Apply 3.0 grams of "Y" grease,
No. 49-08-5270 to gear bore of
gearcase #24. The grease should be
directed toward the pinion
end of the armature.

Apply a light film of
lubricant to the
bearing bore of the
gearcase before
assembling the
armature/bearing.



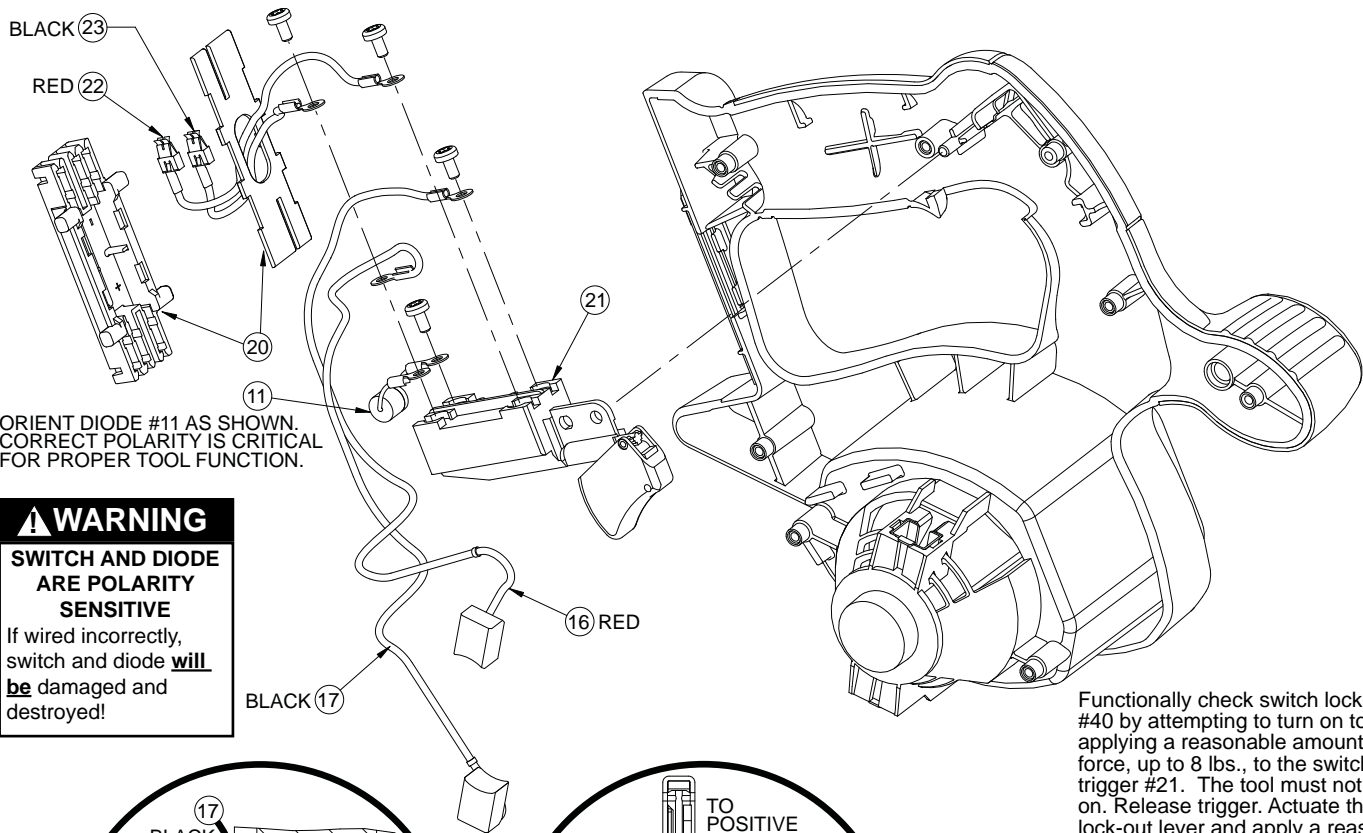
★ = Part number change
from previous service
parts list.

Functionally
check the lower
guard #26, with the
saw set at full depth of
cut and 0° bevel. Place the
saw upside down with the shoe
horizontal. Fully retract the guard and
then release it. The guard must return briskly.

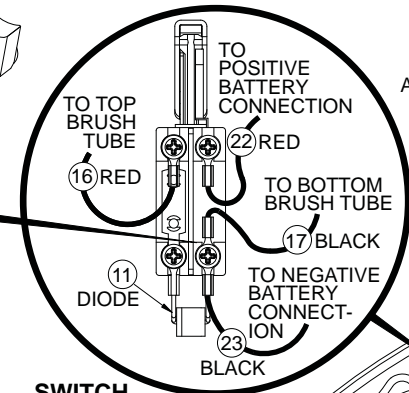
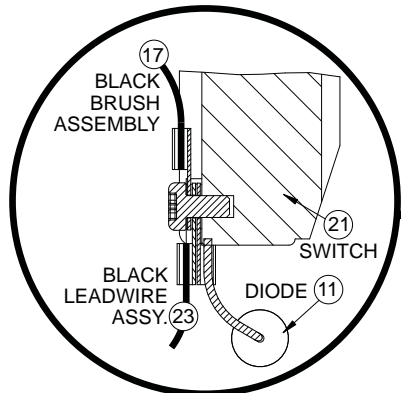
FIG.	PART NO.	DESCRIPTION OF PART	NO. REQ.
1	02-04-1212	Ball Bearing	(1)
2	02-04-5130	Ball Bearing	(1)
3	02-50-1640	Needle Bearing	(1)
4	06-75-1010	Left Hand Screw	(1)
5	06-75-5860	1/4-20 x 3/4 Screw	(1)
6	06-82-5285	6-32 x .5 Pan Hd. Taptite Screw T-15	(5)
7	06-82-5314	10-24 x .5 Pan Hd. Taptite Screw T-25	(5)
8	06-82-7470	6-19 x .687 Plastite Torx Screw T-15	(8)
9	06-82-7475	6-19 x .875 Plastite Torx Screw T-15	(4)
10	10-20-2840	Logo Label	(1)
11	22-74-0510	Diode Assembly	(1)
12	12-20-3340	Service Nameplate	(1)
13	14-74-0310	Shoe Assembly	(1)
14	16-01-2125	Armature	(1)
15	18-01-2000	Field	(1)
16	22-18-1240	Brush Assembly - Red	(1)
17	22-18-1245	Brush Assembly - Black	(1)
18	22-20-0425	Brush Tube	(2)
19	22-32-0420	Brush Spring Clip	(2)
19a	40-50-8745	Brush Spring	(2)
20	22-56-0975	Connector Block Assembly	(1)
21	23-66-1005	Service Switch	(1)
22	23-94-4290	Leadwire Assembly - Red	(1)
23	23-94-4295	Leadwire Assembly - Black	(1)
★ 24	28-14-0747	Gearcase	(1)
★ 25	28-20-1160	Upper Guard Cover	(1)
★ 26	28-41-0956	Lower Guard	(1)
27	31-05-0350	Baffle	(1)
28	31-15-0601	Gearcase Cover	(1)
29	31-44-2040	Right Handle Halve	(1)
30	31-44-2045	Left Handle Halve	(1)
31	32-75-1310	Spindle Gear	(1)

FIG.	PART NO.	DESCRIPTION OF PART	NO. REQ.
32	34-40-4480	O-Ring	(1)
33	34-60-0860	Retaining Ring - External	(1)
34	34-60-0920	Retaining Ring - External	(2)
35	38-50-1160	Spindle	(1)
36	40-50-0045	Guard Spring	(1)
37	40-50-0350	Spring	(1)
38	40-50-8040	Spring	(1)
39	42-38-0222	Rubber Bumper	(1)
40	42-42-1020	Switch Lock-Out	(1)
41	42-42-1030	Spindle Lock Button	(1)
42	43-34-0790	Inner Flange	(1)
43	43-34-0795	Outer Flange	(1)
44	44-10-0420	Guard Lever	(1)
45	44-10-0430	Depth Lever	(1)
46	44-20-0650	Spindle Lock	(1)
47	-----	Connector Block Cover	(1)
48	44-60-0740	Pivot Pin	(1)
★ 49	44-66-0561	Retaining Plate	(1)
50	45-04-0485	Bumper Screw	(1)
51	45-06-0720	Felt Seal	(1)
52	45-08-0395	Depth Shaft	(1)
53	45-88-1515	Washer	(1)
54	45-88-5615	Wave Spring Washer	(1)
55	49-96-0080	3/16 Hex Key	(1)
56	06-10-0660	1/4-20 x 1/2 Short Neck Carriage Bolt	(1)
57	45-88-1560	Washer	(1)
58	43-98-0730	Bevel Adjustment Knob	(1)
59	43-98-0720	Rip Fence Knob	(1)
60	40-50-0650	Spring	(1)
61	06-82-9605	10-32 x 3/8 CSK Machine Screw T-25	(4)
62	06-83-1600	10-32 x 3/8 Set Screw	(1)
63	14-46-2575	Gear Service Assembly	(1)
	49-22-1001	Rip Fence (Not Shown)	(1)

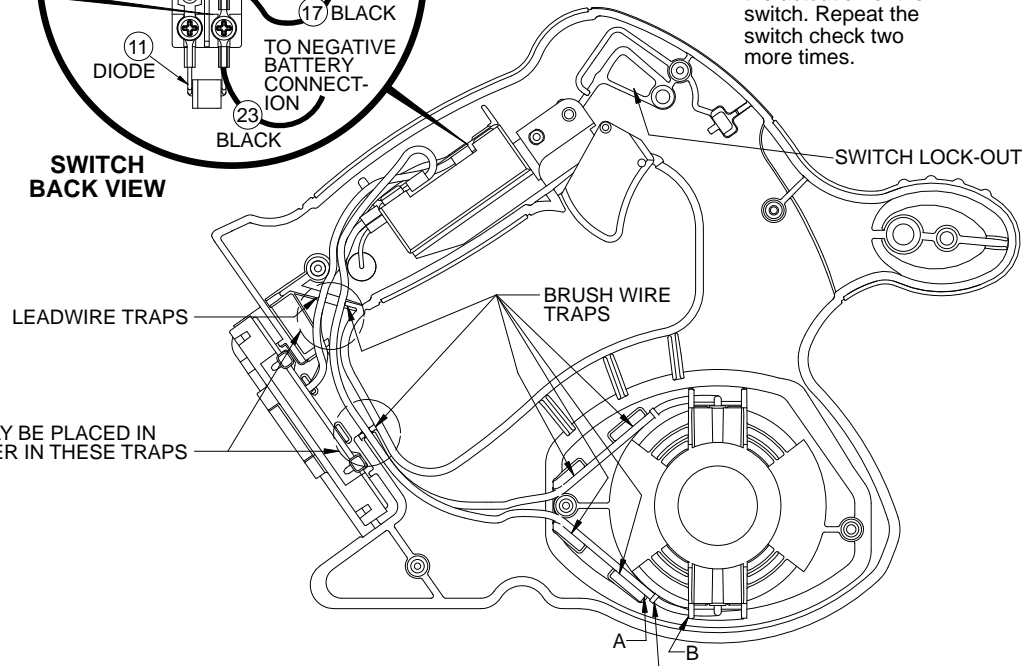
FIG. NOTE:
2 Orient the ball bearing so that the seal faces the
commutator and the shield faces the shaft end.
3 Press needle bearing flush to .015 sub-flush in gearcase.
20,47 Concave side of connector block cover to face
connector block.
26,33 Position retaining ring with rounded edge facing
lower guard.
46 Functionally check spindle lock. Spindle lock must return
briskly when released from engagement in gear.



Functionally check switch lock-out #40 by attempting to turn on tool by applying a reasonable amount of force, up to 8 lbs., to the switch trigger #21. The tool must not turn on. Release trigger. Actuate the lock-out lever and apply a reasonable amount of force to the switch trigger. The tool must turn on. While the trigger is still in the "ON" position, release the lock-out. Release the trigger. The tool must stop and the lock-out lever must again prevent the actuation of the switch. Repeat the switch check two more times.



ALL TERMINALS MUST BE ORIENTED AS SHOWN IN THESE VIEWS.



WIRING SPECIFICATIONS

Wire No.	Wire Color	Origin or Gauge	Length	Terminals, Connectors and 1 or 2 End Wire Preparation
16	Red	22-18-1240	----	Carbon brush assembly.
17	Black	22-18-1245	----	Carbon brush assembly.
22	Red	23-94-4290	----	Leadwire assembly.
23	Black	23-94-4295	----	Leadwire assembly.
		22-74-0510	----	Diode assembly.

BULK LEAD WIRE - BULLETIN NO. 58-01-0003

TERMINAL DESCRIPTION

Code	Part No.	Qty.