



# SERVICE PARTS LIST

BULLETIN NO.  
54-06-2410

SPECIFY CATALOG NO. AND SERIAL NO. WHEN ORDERING PARTS		REVISED BULLETIN	DATE
<b>Cordless 12 Volt 3/8" Driver Drill</b>			Apr. 2009
CATALOG NO. <b>2410-20</b>	STARTING SERIAL NO. <b>C10A</b>	WIRING INSTRUCTION <b>SEE REVERSE SIDE</b>	

**EXAMPLE:**  

00	0
----	---

 Component Parts (Small #)  
 Are Included When Ordering  
 The Assembly (Large #).

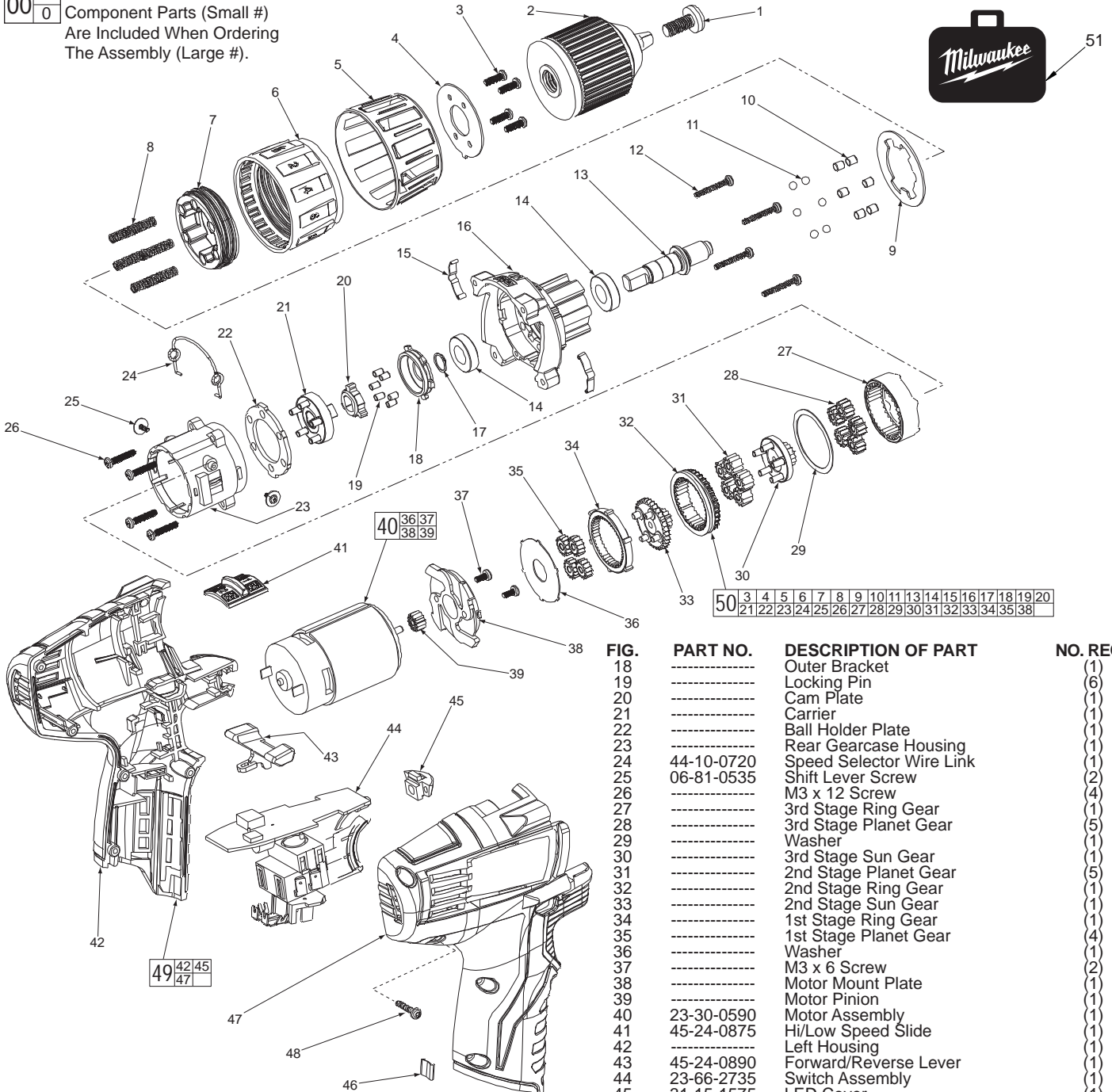
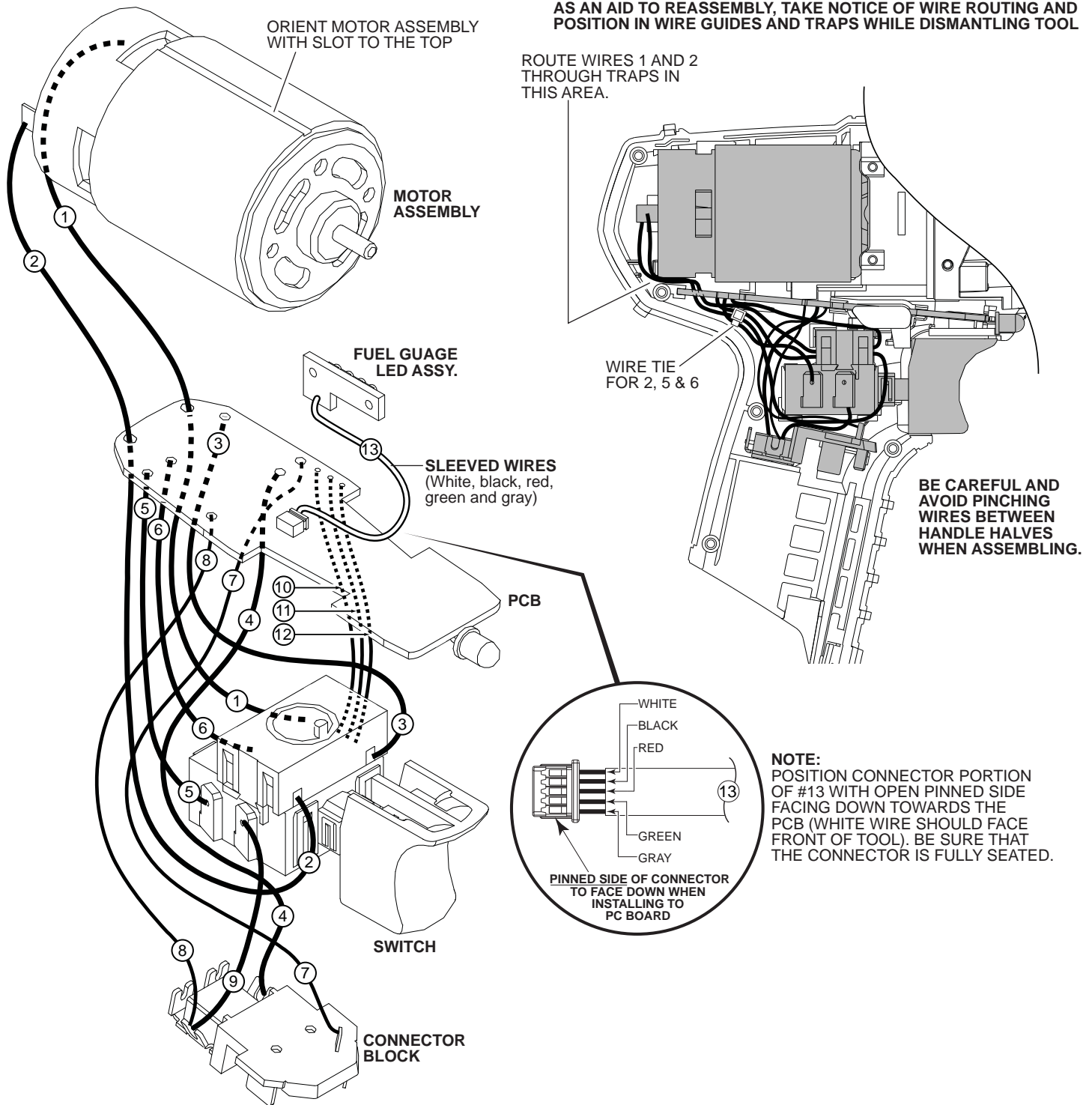


FIG.	PART NO.	DESCRIPTION OF PART	NO. REQ.
1	05-88-1680	Chuck Screw	(1)
2	42-66-0800	Chuck	(1)
3	-----	M3 x 10 Screw	(4)
4	-----	Spring plate Holder	(1)
5	-----	Clutch Ring Cap	(1)
6	-----	Clutch Ring Cup	(1)
7	-----	Sleeve	(1)
8	-----	Spring	(6)
9	-----	Clutch Washer	(1)
10	-----	Pin	(6)
11	-----	Ball	(6)
12	06-82-7336	Gearcase Screw	(4)
13	-----	Output Shaft	(1)
14	-----	Ball Bearing	(2)
15	-----	Stamping	(2)
16	-----	Front Gearcase Housing	(1)
17	-----	Retaining Ring	(1)

FIG.	PART NO.	DESCRIPTION OF PART	NO. REQ.
18	-----	Outer Bracket	(1)
19	-----	Locking Pin	(6)
20	-----	Cam Plate	(1)
21	-----	Carrier	(1)
22	-----	Ball Holder Plate	(1)
23	-----	Rear Gearcase Housing	(1)
24	44-10-0720	Speed Selector Wire Link	(1)
25	06-81-0535	Shift Lever Screw	(2)
26	-----	M3 x 12 Screw	(4)
27	-----	3rd Stage Ring Gear	(1)
28	-----	3rd Stage Planet Gear	(5)
29	-----	Washer	(1)
30	-----	3rd Stage Sun Gear	(1)
31	-----	2nd Stage Planet Gear	(5)
32	-----	2nd Stage Ring Gear	(1)
33	-----	2nd Stage Sun Gear	(1)
34	-----	1st Stage Ring Gear	(1)
35	-----	1st Stage Planet Gear	(4)
36	-----	Washer	(1)
37	-----	M3 x 6 Screw	(2)
38	-----	Motor Mount Plate	(1)
39	-----	Motor Pinion	(1)
40	23-30-0590	Motor Assembly	(1)
41	45-24-0875	Hi/Low Speed Slide	(1)
42	-----	Left Housing	(1)
43	45-24-0890	Forward/Reverse Lever	(1)
44	23-66-2735	Switch Assembly	(1)
45	31-15-1575	LED Cover	(1)
46	42-70-0055	Housing Clip	(1)
47	-----	Right Housing	(1)
48	06-82-6350	M3 T-10 Housing Screw	(5)
49	31-44-1240	Housing Kit	(1)
50	14-30-1000	Gearcase Assembly	(1)
51	42-55-2410	Carrying Case, Optional	(1)
	12-20-1850	Service Nameplate (Not Shown)	(1)
	10-20-2697	Warning Label (Not Shown)	(1)

**FIG. 38,40,50** **NOTES:**  
 Service replacement gearcase assembly (50) comes with a motor mount plate (38) that must be removed and discarded when servicing. A motor mount plate already exists on the motor assembly (40).

AS AN AID TO REASSEMBLY, TAKE NOTICE OF WIRE ROUTING AND POSITION IN WIRE GUIDES AND TRAPS WHILE DISMANTLING TOOL



### WIRING SPECIFICATIONS

Wire No.	Wire Color	Origin or Gauge	Length	Terminals, Connectors and 1 or 2 End Wire Preparation
1	Black	23-30-0590	-----	Component of the motor assembly.
2	Red	23-30-0590	-----	Component of the motor assembly.
3	White	23-66-2735	-----	Component of the switch assembly.
4	Black	23-66-2735	-----	Component of the switch assembly.
5	Black	23-66-2735	-----	Component of the switch assembly.
6	Red	23-66-2735	-----	Component of the switch assembly.
7	White	23-66-2735	-----	Component of the switch assembly.
8	Red	23-66-2735	-----	Component of the switch assembly.
9	Red	23-66-2735	-----	Component of the switch assembly.
10	Yellow	23-66-2735	-----	Component of the switch assembly.
11	Blue	23-66-2735	-----	Component of the switch assembly.
12	Black	23-66-2735	-----	Component of the switch assembly.
13	Sleeve	23-66-2735	-----	Component of the switch assembly / fuel gauge LED.