



SERVICE PARTS LIST

BULLETIN NO.
54-26-2450

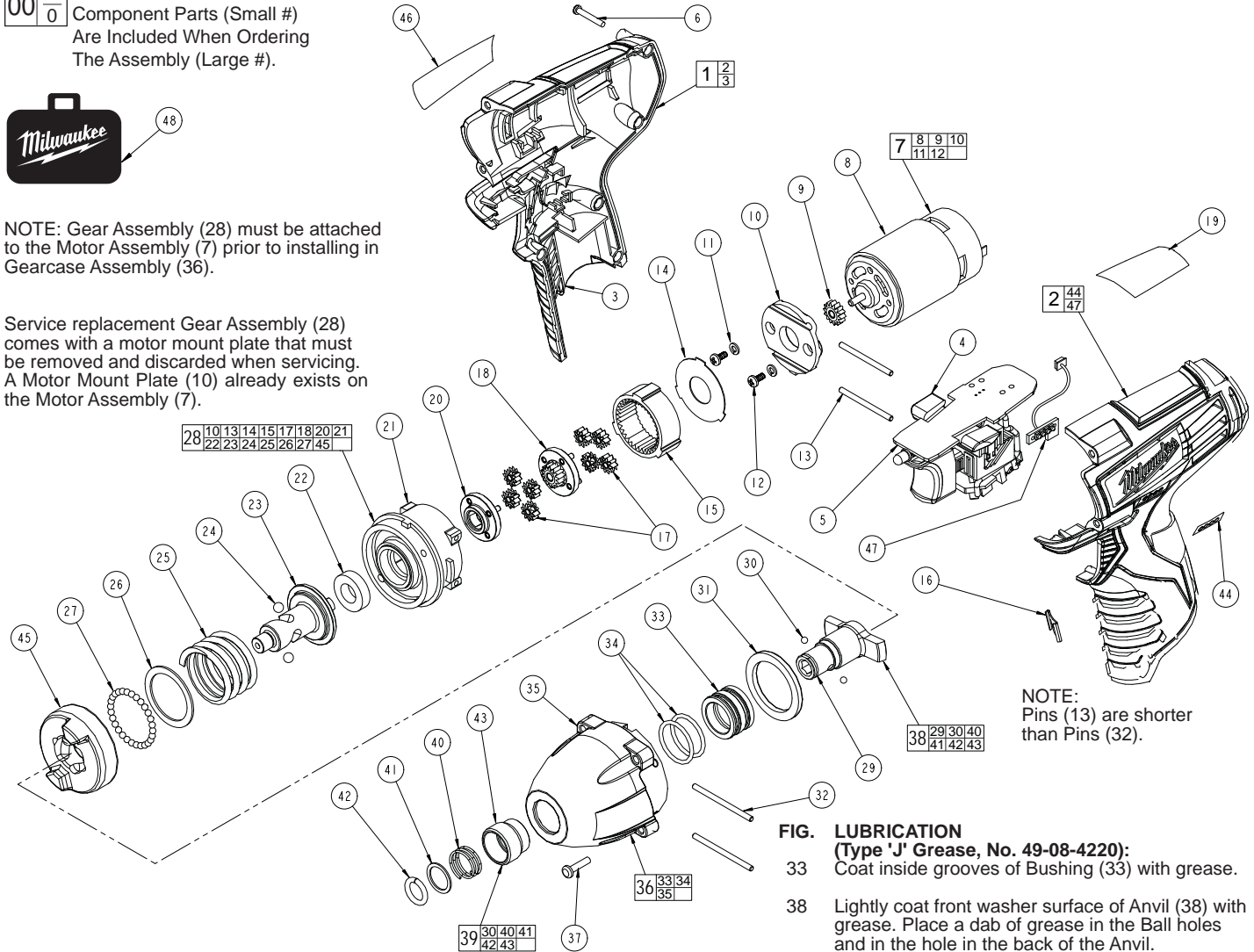
SPECIFY CATALOG NO. AND SERIAL NO. WHEN ORDERING PARTS			REVISED BULLETIN	DATE
12 Volt Impact Driver				Feb. 2009
CATALOG NO.	2450-20	STARTING SERIAL NO.	WIRING INSTRUCTION	
		B59A	SEE REVERSE SIDE	

EXAMPLE:
00 0 Component Parts (Small #)
Are Included When Ordering
The Assembly (Large #).



NOTE: Gear Assembly (28) must be attached to the Motor Assembly (7) prior to installing in Gearcase Assembly (36).

Service replacement Gear Assembly (28) comes with a motor mount plate that must be removed and discarded when servicing. A Motor Mount Plate (10) already exists on the Motor Assembly (7).



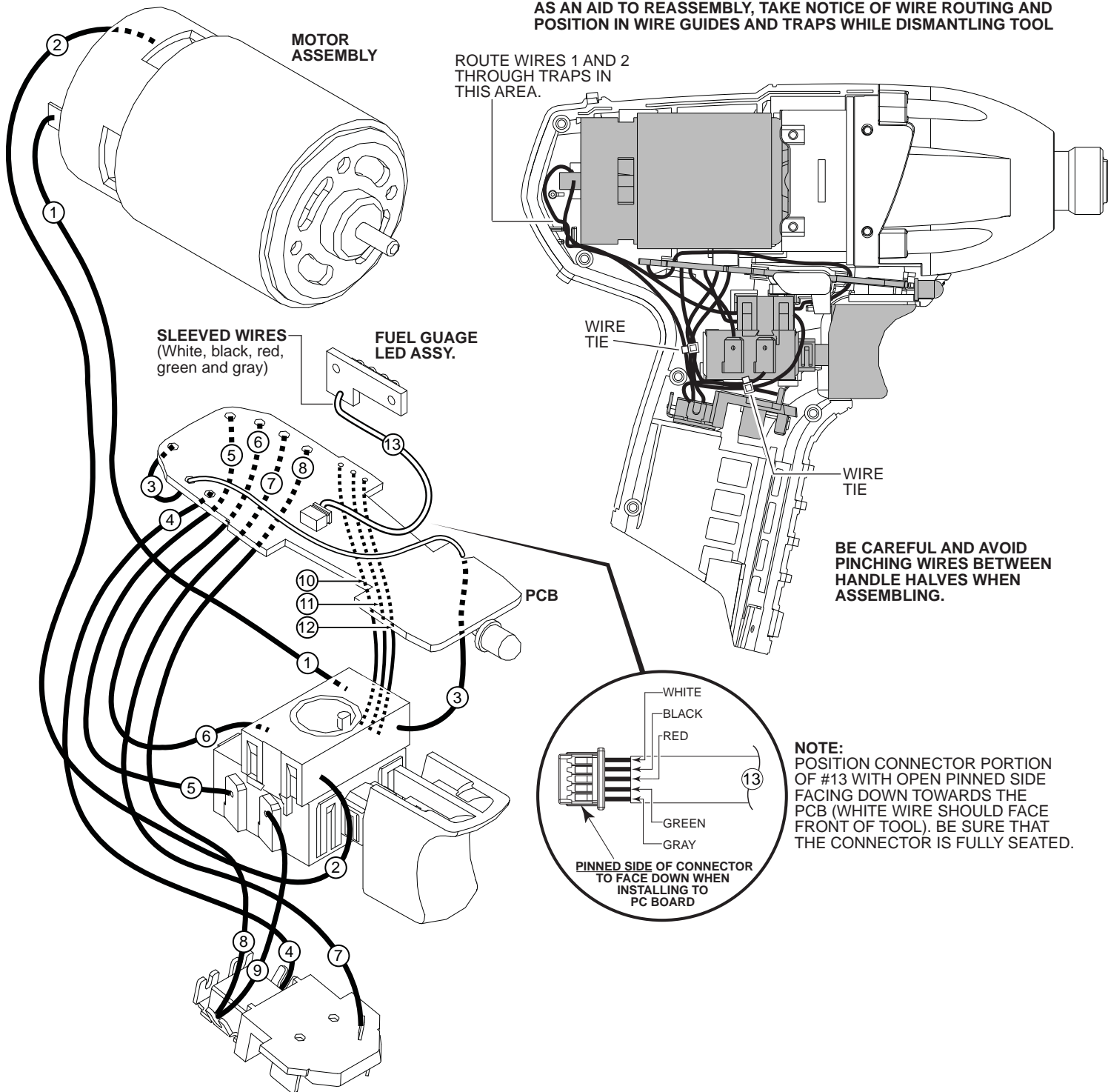
NOTE:
Pins (13) are shorter than Pins (32).

FIG. LUBRICATION
(Type 'J' Grease, No. 49-08-4220):
33 Coat inside grooves of Bushing (33) with grease.
38 Lightly coat front washer surface of Anvil (38) with grease. Place a dab of grease in the Ball holes and in the hole in the back of the Anvil.

FIG.	PART NO.	DESCRIPTION OF PART	NO. REQ.
1	31-50-2402	Handle Set	(1)
2	-----	Left Handle Half	(1)
3	-----	Right Handle Half	(1)
4	45-24-0105	Fwd./Rev. Button	(1)
5	23-66-1105	Electronics Module Assembly	(1)
6	06-82-2385	M2.6 x 14 T-9 Screw	(5)
7	23-30-0090	Motor Service Assembly	(1)
8	-----	Motor	(1)
9	-----	Pinion	(1)
10	-----	Motor Mount	(1)
11	-----	Washer	(2)
12	-----	M3 x 6 Screw	(2)
13	06-65-0075	Pin	(2)
14	-----	Washer	(1)
15	-----	Ring Gear	(1)
16	42-70-0055	Clip	(1)
17	-----	Planet Gear Set	(8)
18	-----	Sun Gear	(1)
19	10-20-0790	Warning Label	(1)
20	-----	Carriage	(1)
21	-----	Rear Housing	(1)
22	-----	Ball Bearing	(1)
23	-----	Cam Shaft	(1)
24	-----	3/16" Dia. Steel Ball	(2)
25	-----	Compression Spring	(1)
26	-----	Washer	(1)

FIG.	PART NO.	DESCRIPTION OF PART	NO. REQ.
27	-----	3.0mm Dia. Steel Ball	(29)
28	14-29-0190	Gear Assembly	(1)
29	-----	Anvil	(1)
30	-----	3.5mm Steel Ball	(2)
31	45-88-0455	Washer	(1)
32	06-65-0085	Pin	(2)
33	-----	Sleeve Bearing	(1)
34	-----	O-Ring	(2)
35	-----	Gear Housing	(1)
36	14-30-0005	Gearcase Assembly	(1)
37	06-81-0005	M3.5 x 24 Screw	(4)
38	45-22-0015	Sleeve and Anvil Assembly	(1)
39	45-22-0010	Sleeve and Ball Assembly	(1)
40	-----	Spring	(1)
41	-----	Washer	(1)
42	-----	Retaining Ring	(1)
43	-----	Sleeve	(1)
44	-----	LED Label	(1)
45	-----	Hammer	(1)
46	12-20-2450	Service Nameplate	(1)
47	-----	Fuel Gauge LED Assembly	(1)
48	42-55-2450	Carrying Case, Optional	(1)

AS AN AID TO REASSEMBLY, TAKE NOTICE OF WIRE ROUTING AND POSITION IN WIRE GUIDES AND TRAPS WHILE DISMANTLING TOOL



WIRING SPECIFICATIONS

Wire No.	Wire Color	Origin or Gauge	Length	Terminals, Connectors and 1 or 2 End Wire Preparation
1	Black	23-30-0090	-----	Component of the motor assembly.
2	Red	23-30-0090	-----	Component of the motor assembly.
3	White	23-66-1105	-----	Component of the electronics module assembly.
4	Black	23-66-1105	-----	Component of the electronics module assembly.
5	Black	23-66-1105	-----	Component of the electronics module assembly.
6	Red	23-66-1105	-----	Component of the electronics module assembly.
7	White	23-66-1105	-----	Component of the electronics module assembly.
8	Red	23-66-1105	-----	Component of the electronics module assembly.
9	Red	23-66-1105	-----	Component of the electronics module assembly.
10	Yellow	23-66-1105	-----	Component of the electronics module assembly.
11	Blue	23-66-1105	-----	Component of the electronics module assembly.
12	Black	23-66-1105	-----	Component of the electronics module assembly.
13	Sleeve	23-66-1105	-----	Component of the electronics module assy. / Fuel gauge LED.