

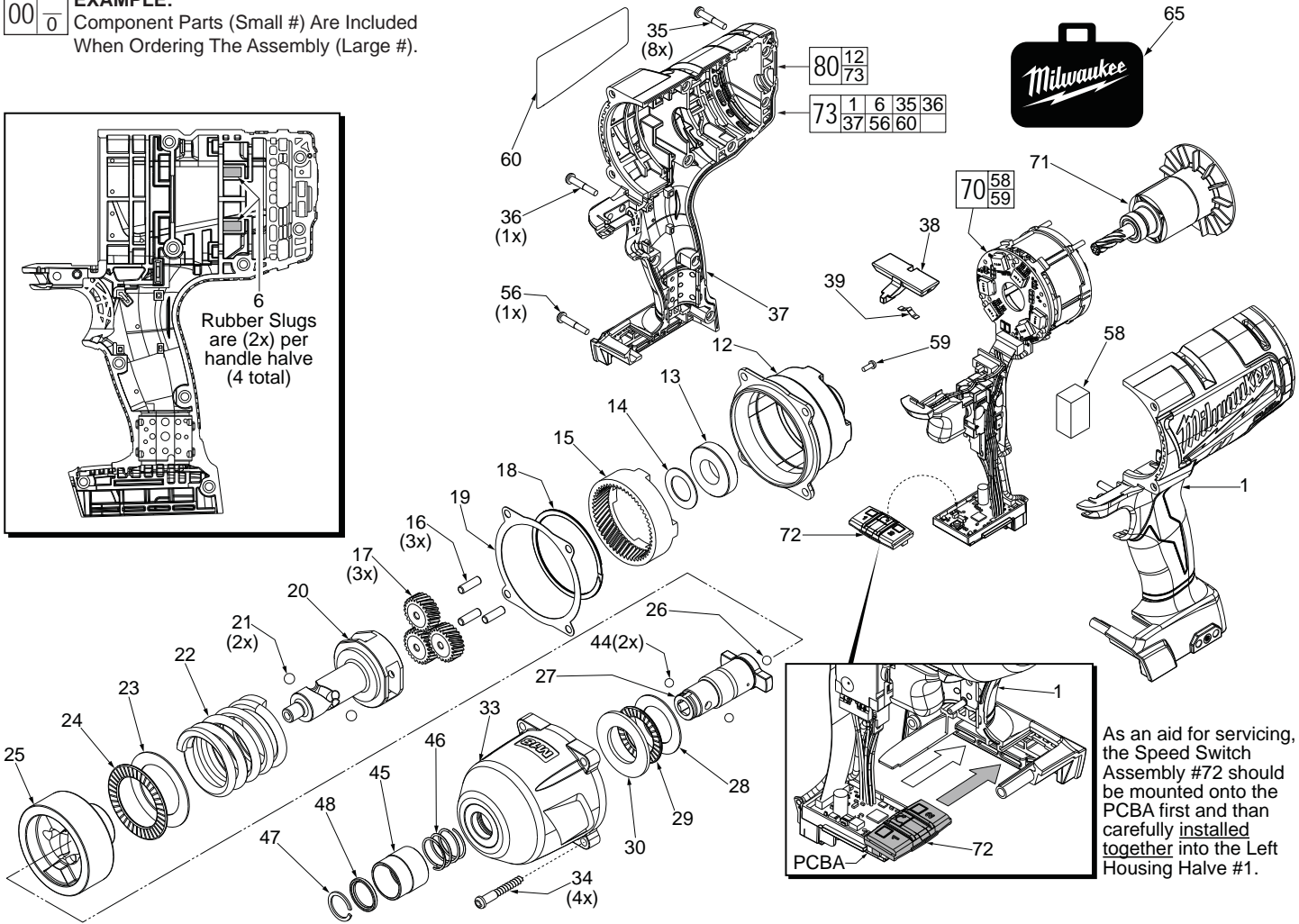
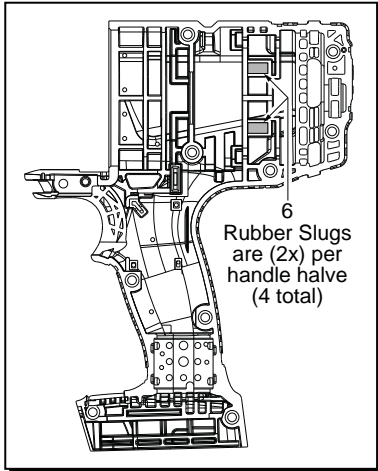


# SERVICE PARTS LIST

**BULLETIN NO.  
54-26-2750**

|  |                                 |   |           |
|--|---------------------------------|---|-----------|
| SPECIFY CATALOG NO. AND SERIAL NO. WHEN ORDERING PARTS |                                 | REVISED BULLETIN                        | DATE      |
| <b>M18 FUEL™ 7/16" QUICK CONNECT IMPACT WRENCH</b>     |                                 |   | Nov. 2013 |
| CATALOG NO. <b>2765-20</b>                             | STARTING SERIAL NO. <b>F44A</b> | WIRING INSTRUCTION<br><b>See Page 2</b> |           |

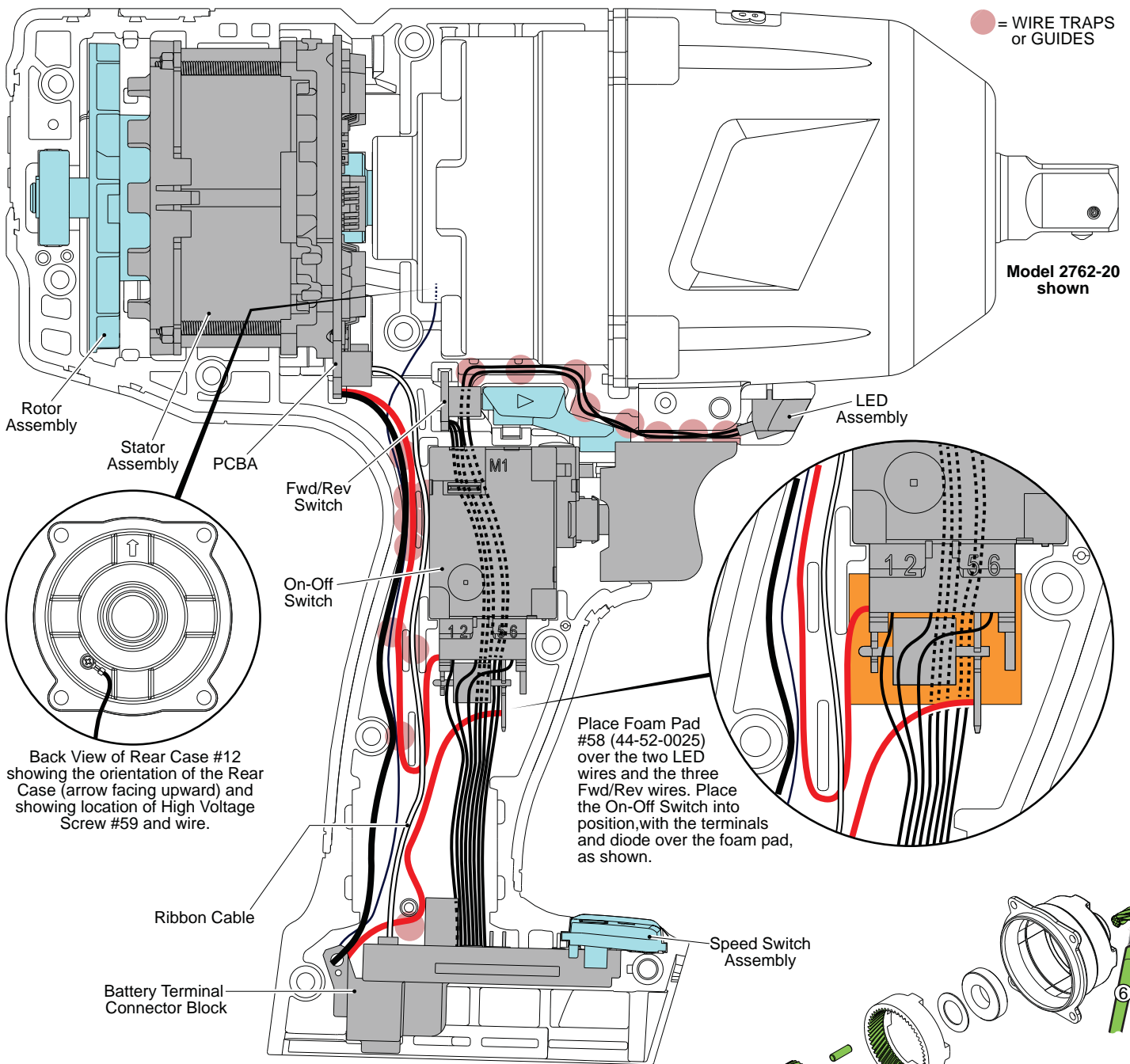
**EXAMPLE:**  
Component Parts (Small #) Are Included  
When Ordering The Assembly (Large #).



As an aid for servicing, the Speed Switch Assembly #72 should be mounted onto the PCBA first and then carefully installed together into the Left Housing Halve #1.

| FIG. | PART NO.   | DESCRIPTION OF PART                              | NO. REQ. | FIG. | PART NO.   | DESCRIPTION OF PART  | NO. REQ. |
|------|------------|--|----------|------|------------|--|----------|
| 1    | -----      | Handle Support (Housing Halve-Left) w/ metal pin | 1        | 46   | 40-50-0365 | Sleeve Spring  | 1        |
| 6    | 45-30-0255 | Rubber Slug                                      | 4        | 47   | 34-60-0050 | Retaining Ring   | 1        |
| 12   | -----      | Rear Case  | 1        | 48   | 44-90-0020 | Washer   | 1        |
| 13   | 02-04-0375 | Ball Bearing                                     | 1        | 56   | 06-81-5383 | M4 x 35mm Pan Hd. Plastite T-20 Screw  | 1        |
| 14   | 45-88-1655 | Thrust Washer                                    | 1        | 58   | 44-52-0025 | Foam Pad   | 1        |
| 15   | 32-65-0025 | Ring Gear  | 1        | 59   | 06-82-0165 | High Voltage Screw   | 1        |
| 16   | 44-60-1960 | Planet Pin                                       | 3        | 60   | 12-20-2626 | Service Nameplate  | 1        |
| 17   | 32-62-0500 | Planet Gear                                      | 3        | 65   | 48-55-3560 | Contractor Bag   | 1        |
| 18   | 30-40-0052 | Retaining Ring                                   | 1        | 70   | 14-20-0092 | Electronics Assembly<br>Consisting of On-Off Switch, Stator, PCBA,<br>Forward/Reverse Switch, LED, Battery<br>Terminal Connector Block, Foam Pad and<br>High Voltage Screw | 1        |
| 19   | 43-44-0065 | Gasket   | 1        | 71   | 16-01-0105 | Rotor Assembly   | 1        |
| 20   | 36-10-0020 | Camshaft   | 1        | 72   | 45-24-0110 | Speed Switch Assembly  | 1        |
| 21   | 02-02-0250 | 1/4" Steel Ball                                  | 2        | 73   | -----      | Housing Assembly   | 1        |
| 22   | 40-50-0955 | Hammer Spring                                    | 1        | 80   | 14-46-0047 | Housing/Rear Case Assembly   | 1        |
| 23   | 45-88-1006 | Thrust Washer                                    | 1        |      |            |  |          |
| 24   | 02-80-0200 | Hammer Thrust Bearing                            | 1        |      |            |  |          |
| 25   | 43-81-0100 | Hammer   | 1        |      |            |  |          |
| 26   | 02-02-7010 | 7/32" Steel Ball                                 | 1        |      |            |  |          |
| 27   | 42-06-0065 | 7/16" Hex Anvil                                  | 1        |      |            |  |          |
| 28   | 45-88-1875 | Thrust Washer                                    | 1        |      |            |  |          |
| 29   | 02-80-3256 | Thrust Bearing                                   | 1        |      |            |  |          |
| 30   | 45-88-1620 | Thrust Washer                                    | 1        |      |            |  |          |
| 33   | 14-30-0120 | Front Housing Assembly with Bushing              | 1        |      |            |  |          |
| 34   | 06-82-2210 | 50 x 40mm Pan Hd. PT T-20 Screw                  | 4        |      |            |  |          |
| 35   | 06-82-0995 | M4 x 16mm Pan Hd. Plastite T-20 Screw            | 8        |      |            |  |          |
| 36   | 06-82-2230 | M4 x 22mm Pan Hd. Plastite T-20 Screw            | 1        |      |            |  |          |
| 37   | -----      | Handle Cover (Housing Halve Right)               | 1        |      |            |  |          |
| 38   | 45-24-0130 | Forward / Reverse Shuttle                        | 1        |      |            |  |          |
| 39   | 40-50-1135 | Shuttle Spring                                   | 1        |      |            |  |          |
| 44   | 02-02-0250 | Steel Ball                                       | 2        |      |            |  |          |
| 45   | 42-76-0185 | Sleeve   | 1        |      |            |  |          |

| SCREW TORQUE SPECIFICATIONS |            |                     |             |          |
|-----------------------------|------------|---------------------|-------------|----------|
| FIG.                        | PART NO.   | WHERE USED          | SEAT TORQUE |          |
|                             |            |                     | (KG/CM)     | (IN/LBS) |
| 34                          | 06-82-2210 | Front Housing Assy. | 36          | 31       |
| 35                          | 06-82-0995 | Housing Assembly    | 12.5        | 11       |
| 36                          | 06-82-2230 | Housing Assembly    | 8.5         | 7        |
| 56                          | 06-82-2240 | Housing Assembly    | 12.5        | 11       |
| 59                          | 06-82-0165 | High Voltage Screw  |             |          |



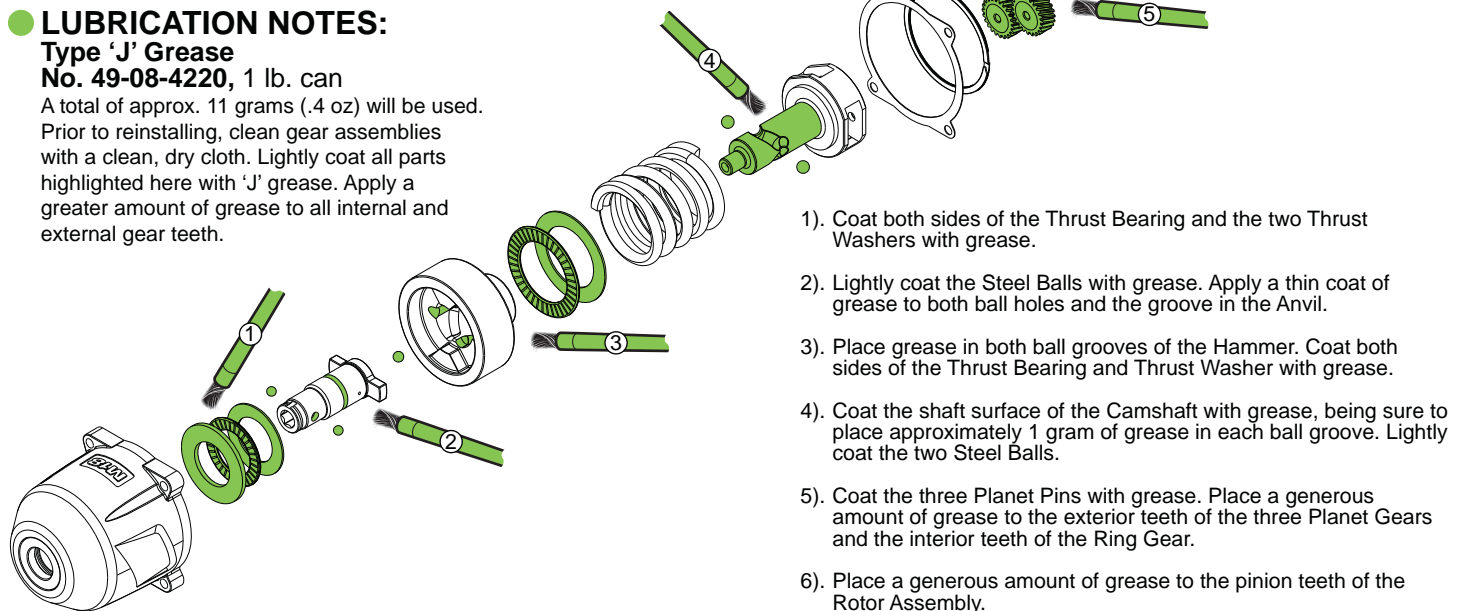
## LUBRICATION NOTES:

### Type 'J' Grease

No. 49-08-4220, 1 lb. can

A total of approx. 11 grams (.4 oz) will be used.

Prior to reinstalling, clean gear assemblies with a clean, dry cloth. Lightly coat all parts highlighted here with 'J' grease. Apply a greater amount of grease to all internal and external gear teeth.



- 1). Coat both sides of the Thrust Bearing and the two Thrust Washers with grease.
- 2). Lightly coat the Steel Balls with grease. Apply a thin coat of grease to both ball holes and the groove in the Anvil.
- 3). Place grease in both ball grooves of the Hammer. Coat both sides of the Thrust Bearing and Thrust Washer with grease.
- 4). Coat the shaft surface of the Camshaft with grease, being sure to place approximately 1 gram of grease in each ball groove. Lightly coat the two Steel Balls.
- 5). Coat the three Planet Pins with grease. Place a generous amount of grease to the exterior teeth of the three Planet Gears and the interior teeth of the Ring Gear.
- 6). Place a generous amount of grease to the pinion teeth of the Rotor Assembly.